

Wikiprint Book

Title: Run Ecopath Console Example

Subject: Ecopath Developer Site - EweConsoleAppExample

Version: 9

Date: 2024-04-19 17:59:18

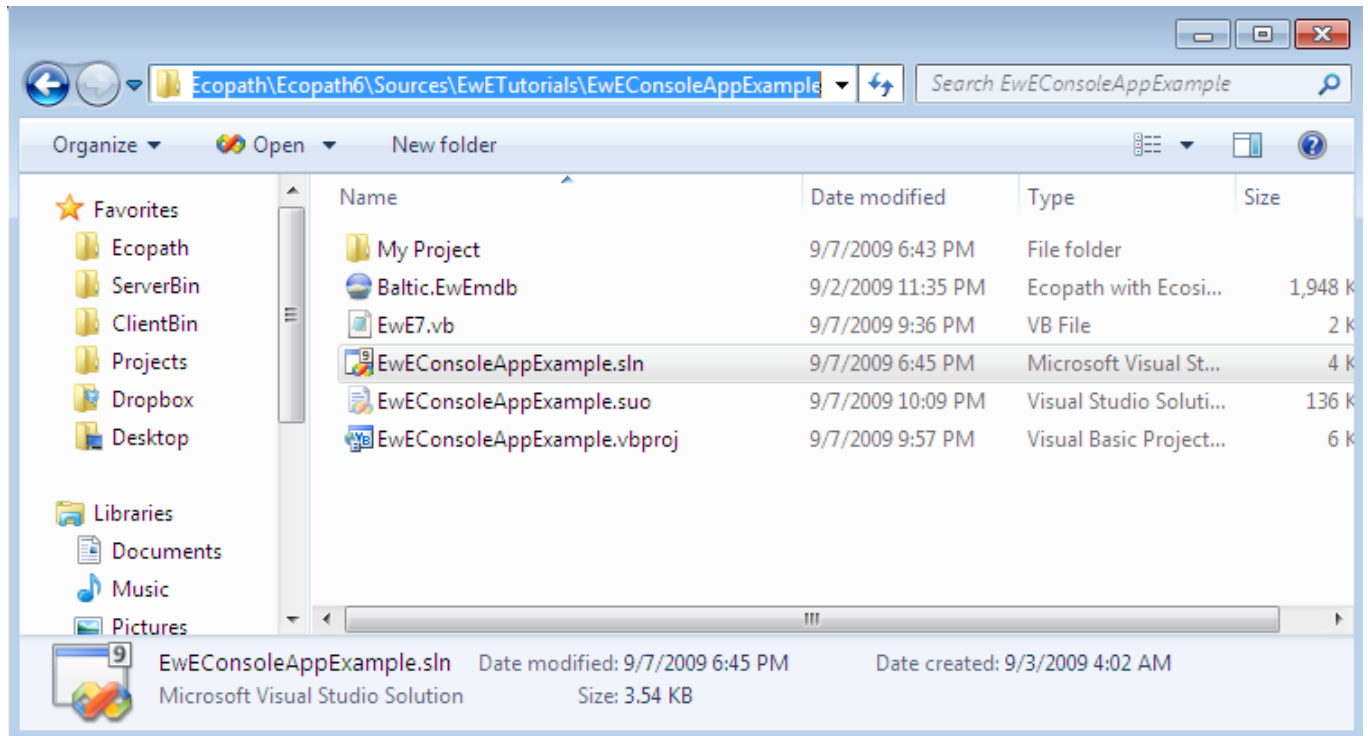
Table of Contents

Run Ecopath Console Example	3
-----------------------------	---

Run Ecopath Console Example

In this example a simple console application is examined that performs the very basic steps needed to work with the Ecopath code: loading a model, running Ecopath, and extracting a value from the Ecopath results. You will require [access to the Ecopath source code](#).

- i. Open Microsoft Visual Studio or Microsoft Visual Studio Express and open the file [/Ecopath6/Sources/EwETutorials/EwEConsoleAppExample/EwEConsoleAppExample.sln](#). Do not worry if you do not see all the files in the image below such as the .suo file; Visual Studio will create all



Run the application by hitting *F5* or *Debug>Start Debugging* in the menu. One should see the following written in the console:

```
Group 'Spring phytopla' EE estimated to 0.2006739
Press a key to exit
```

- i. To see the code, open the solution explorer via Menu > View > Solution Explorer, and browse to the file `EwE7.vb` as seen below.

