

## **Wikiprint Book**

**Title: Run Ecopath Console Example**

**Subject: Ecopath Developer Site - EweConsoleAppExample**

**Version: 9**

**Date: 2024-04-19 07:14:11**

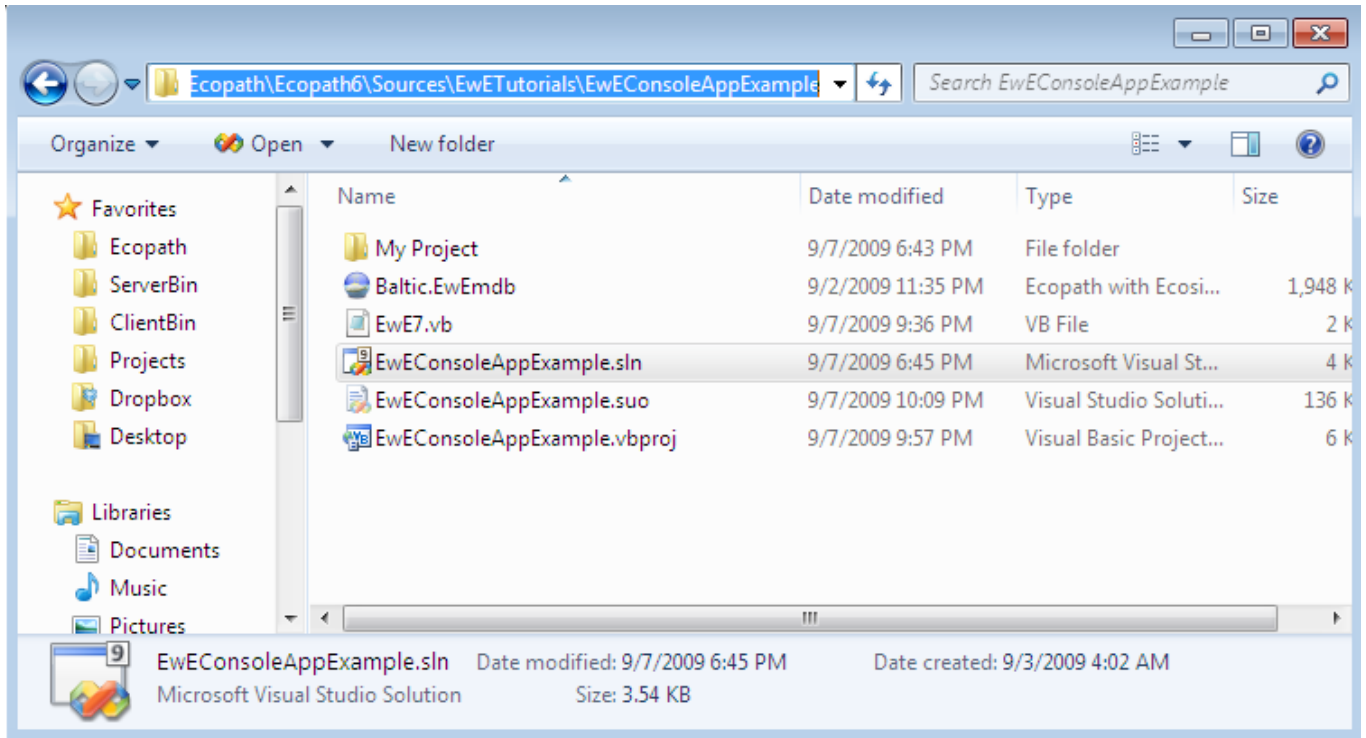
## Table of Contents

Run Ecopath Console Example	3
-----------------------------	---

## Run Ecopath Console Example

In this example a simple console application is examined that performs the very basic steps needed to work with the Ecopath code: loading a model, running Ecopath, and extracting a value from the Ecopath results. It is assumed that you have [access to the Ecopath source code](#).

- i. Open Microsoft Visual Studio or Microsoft Visual Studio Express and open the file [/EcopathLocation?/Ecopath6\Sources\EwETutorials\EwEConsoleAppExample\EwEConsoleAppExample.sln](#)



Run the application by hitting *F5* or *Debug>Start Debugging* in the menu. One should see the following written in the console:

```
Group 'Spring phytopla' EE estimated to 0.2006739
Press a key to exit
```

- i. To see the code, find the solution explorer on the right and browse to the file `EwE7.vb` as seen below.

