

## **Wikiprint Book**

**Title: Run Ecopath Console Example**

**Subject: Ecopath Developer Site - EweConsoleAppExample**

**Version: 9**

**Date: 2024-04-25 05:11:04**

## Table of Contents

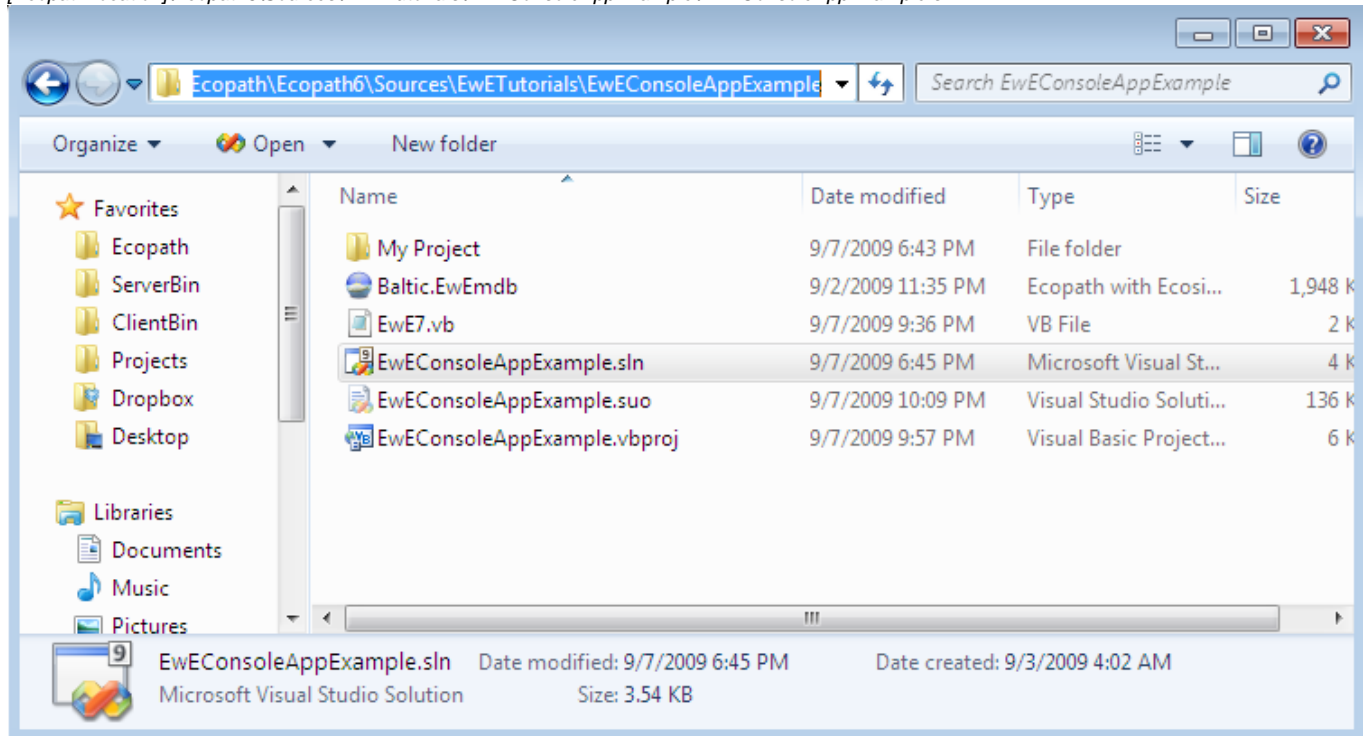
Run Ecopath Console Example	3
-----------------------------	---

## Run Ecopath Console Example

In this example a simple console application is examined that performs the very basic steps needed to work with the Ecopath code: loading a model, running Ecopath, running Ecosim and extracting a value from Ecosim at an arbitrary time step. It is assumed that you have access to the Ecopath source code.

- i. Open Visual [Studio/Visual?](#) Studio Express and open the file

[EcopathLocation]\Ecopath6\Sources\EwETutorials\EwEConsoleAppExample\EwEConsoleAppExample.sln



Run the application by hitting *F5* or *Debug>Start Debugging* in the menu. One should see the following written in the console:

```
Group 'Spring phytopla' EE estimated to 0.2006739
Press a key to exit
```

- i. To see the code, find the solution explorer on the right and browse to the file EwE7.vb as seen below.

