

Wikiprint Book

Title: Run Ecopath Console Example

Subject: Ecopath Developer Site - EweConsoleAppExample

Version: 9

Date: 2024-04-18 16:51:49

Table of Contents

Run Ecopath Console Example	3
-----------------------------	---

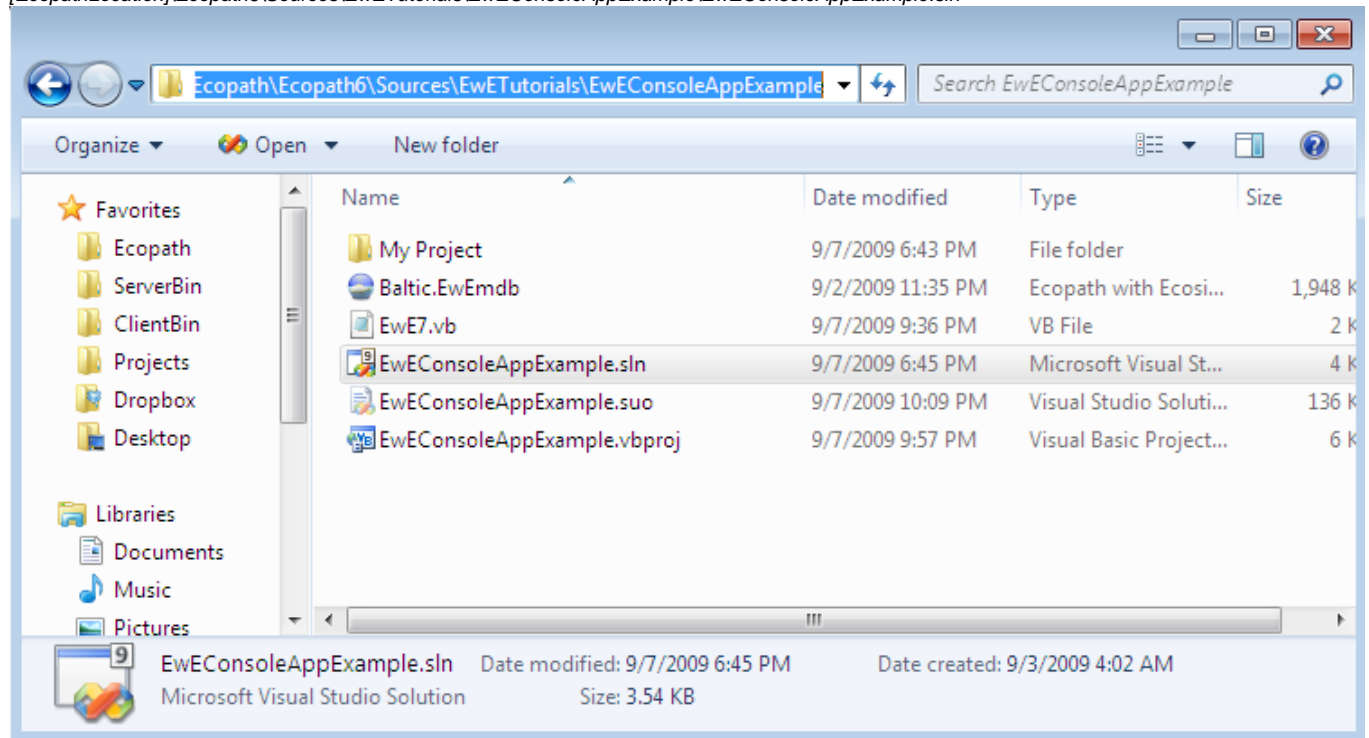
Run Ecopath Console Example

This tutorial will create a simple console application that would load a database and run Ecopath and output the EE of the first group. This tutorial can be found in the sources directory.

This tutorial can be extended to various applications and tutorials. It is the basics of running the core without the entire user interface most know as EwE6.

- i. Open Visual [Studio/Basic?](#) and open the file

[EcopathLocation]\Ecopath6\Sources\EwETutorials\EwEConsoleAppExample\EwEConsoleAppExample.sln



Run the application by hitting *F5* or *Debug>Start Debugging* in the menu. One should see the following written in the console:

```
Group 'Spring phytopla' EE estimated to 0.2006739
Press a key to exit
```

- i. To see the code, find the solution explorer on the right and browse to the file EwE7.vb as seen below.

