


8.1 Getting started in Ecosim: The Ecosim menu

When working in Ecosim or Ecospace you work within a ?scenario?. A given Ecopath model can have any number of Ecosim and Ecospace scenarios attached, and they all inherit their basic parameters (such as number of groups, group names, diets and other parameters) from the parent Ecopath model. If you change a group name or delete a group in Ecopath the changes will be carried over to existing (and new) Ecosim and Ecospace scenarios. A scenario keeps track of all the information that is needed to store and later duplicate a simulation.

Important note: Before using Ecosim you must have a balanced Ecopath model. Once you have finished balancing your Ecopath model you can begin using Ecosim. Note that once you start using Ecosim, especially when you start fitting to time series data, you will most likely encounter unexpected problems that require you to iteratively make adjustments to your Ecopath model (for example, groups becoming extinct because predation or fishing pressure is too high). Iterating between Ecopath and Ecosim in this way can be time-consuming but is very informative. Indeed, running Ecosim is an important test of the viability of a newly-balanced model and can raise interesting research questions.

New scenario...

When you are ready to start using Ecosim, you must first create a new Ecosim scenario. You can do this by selecting *New Scenario...* on the Ecosim menu (Figure 8.1). This will open the *New Ecosim scenario* dialogue box (Figure 8.2a) where you can name your new scenario and add a description.

Alternatively, you can click once on the *Ecosim shortcut button* , which will open the *Load Ecosim scenario* dialogue box (Figure 8.2 b). Select the *Create* option to change it into the *New Ecosim scenario* dialogue box.

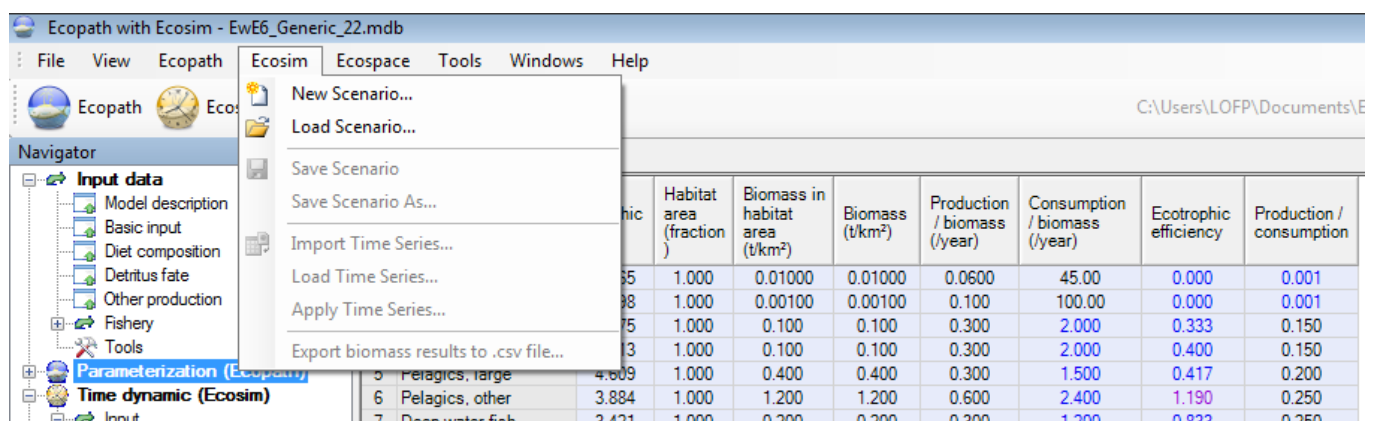


Figure 8.1 The *Ecosim* menu. The *Ecosim shortcut button* can also be seen immediately to the left of the open menu.

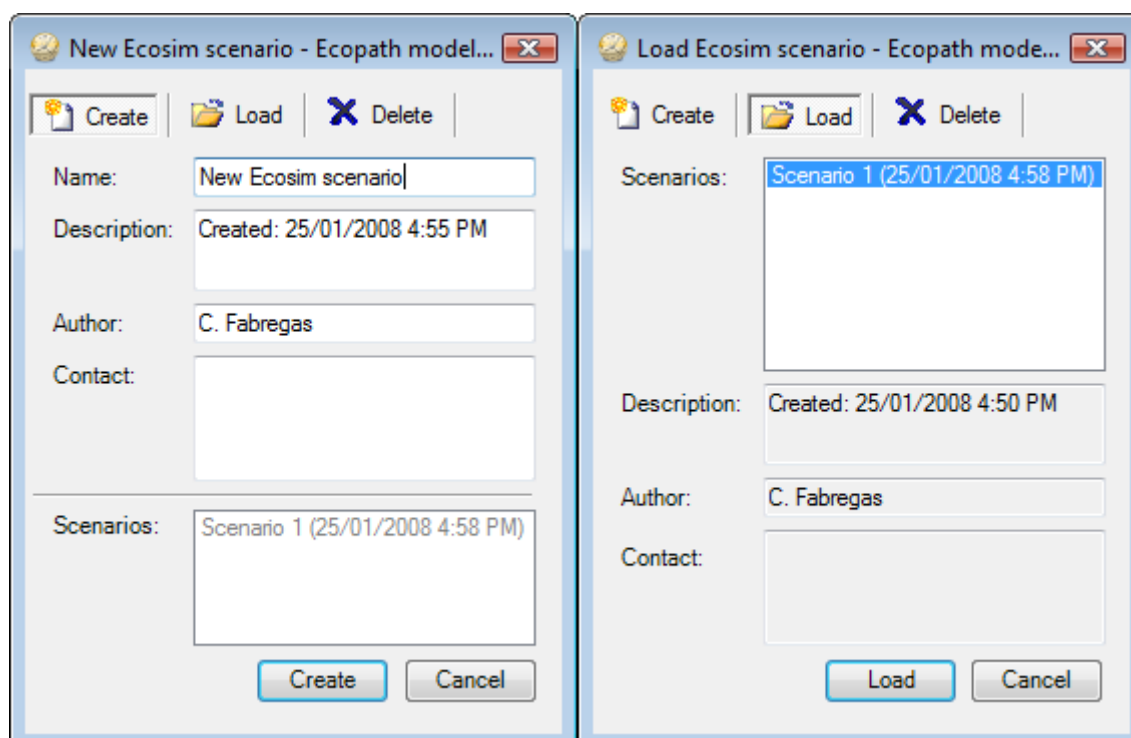


Figure 8.2 a) The *New Ecosim scenario* dialogue box. b) The *Load Ecosim scenario* dialogue box.

Load scenario...

The procedure for opening an existing Ecosim scenario is similar to that for creating a new scenario. Open the *Load Ecosim scenario* dialogue box by selecting Load scenario from the *Ecosim menu*. Existing scenarios will be listed in the *Scenarios* window (Figure 8.2b). Select the scenario you wish to load and click the *Load* button at the bottom of the dialogue box.

Alternatively, you can open a scenario directly using *Ecosim's shortcut button* [\[Image\(wiki:EwEugImages:03000092.png\)?\]](#). Click on the down arrow on the right of the bottom to open a list of available scenarios and click on the name of the desired scenario. Note that the model must be closed and re-opened before new scenarios are added to menu under the *Ecosim shortcut button*. New scenarios can always be accessed from the *Load Ecosim scenario* dialogue box, regardless of when they were created.

To delete an Ecosim scenario select the scenario you wish to delete in the *Scenarios* window and click the *Delete* button at the top of the dialogue box. The *Load* button at the bottom of the box will then change to a *Delete* button, which must be clicked. You will be given the option to proceed or cancel. Clicking *Yes* implements deletion. Clicking *No* cancels deletion and you can then exit the dialogue box by clicking the *Cancel* button.

WARNING: Scenario deletion cannot be undone.

Save Scenario

You can save a scenario at any time by selecting *Save scenario* on the *Ecosim menu*.

Save Scenario As...

The *Ecosim menu* also has a *Save As...* option, allowing you to save your scenario under a new name. This is an important feature that allows you to preserve properties of an Ecosim scenario that you are happy with (e.g., [Vulnerabilities?](#), [Group info?](#)), while exploring the impact of other factors in different scenarios. It is also a useful way to create a backup of a successful scenario before trying out new parameter values.

Import time series

There are two main types of data that you can read in to Ecosim: historical comparison data and time forcing data. Use *Import time series* to open a dialogue box that enables you to import a data file containing these types of data. For further instructions on using this dialogue box, see [Import time series](#).

Important note: Imported time series are loaded into your database but not into your scenario. Use *Load time series* and *Apply time series* on this menu or in the [Time series](#) form to load and apply time series into your scenario.

For important introductory information about fitting Ecosim models to time series data, see [Time series fitting in Ecosim?](#) and [Hints for fitting models to time series reference data](#).

Load time series...

You can import multiple time series into your database but, if you wish, only use a subset of them. Select *Load time series...* to load the current time series into your model. This option is also available on the [Time series](#) form.

Apply time series...

All imported and loaded time series must be applied before they are available to Ecosim. To apply all loaded time series to your model, click *Apply time series...* For more information on applying time series, see [Time series](#). Use the *Time series* form to selectively apply individual time series to your model.

Export biomass results to .csv file

Exports the raw biomass results of the last Ecosim run to a csv file. See the [Run Ecosim](#) form for more details about these results.