

Wikiprint Book

Title: EwEugEcosimPlot

Subject: Ecopath Developer Site - EwEugEcosimPlot

Version: 6

Date: 2019-07-18 08:51:35

Table of Contents

9.3 Ecosim plot

3

9.3 Ecosim plot

Selecting *Ecosim plot* after running Ecosim (see *Run Ecosim*) opens a form displaying a series of plots of the results of the Ecosim simulations. Select the group to be displayed by clicking on its name in the Groups window on the right of the form. Plots will be displayed showing time series of predicted biomass, consumption/biomass, predation mortality, total mortality, feeding time, percentage of prey, yield and production/consumption (see Figure 9.3).

If you have loaded and applied time series of historical data using the [Time series](#) form, dots will appear on the Biomass plot showing the observed biomass time series, while dots on the Yield plot will show observed catches ($t \cdot \text{km}^2 \cdot \text{year}^{-1}$). Ecosim's predicted biomasses and catches are shown as lines.

Time series

Displays values of currently-loaded time series for the selected group.

Save data ...

Saves eight csv-files, one for each of the displayed plots, storing the data for all groups.

Show all fits

Opens the *Show all fits* form, which displays all fits to time series in a form suitable for printing (Figure 9.4). Customize the plot and outputs using the following settings on the form:

Use *Display options* and *Show/hide plots* to select which plots to display (by data type and by group, respectively). Use *General options* (left-hand side of the form) to set font, number of plots per row, dot size, line size and margins. Use *Save as image...* to save the plots as a bitmap (.bmp) file. Export the data to three csv files showing results for biomasses, catches and mortality using *Save data to .csv...* *Change Y scale* allows you to set the maximum Y-value for each individual plot. Print the plots directly using *Print...* and *Print preview...*

Close

Closes the *Ecosim plot* form.

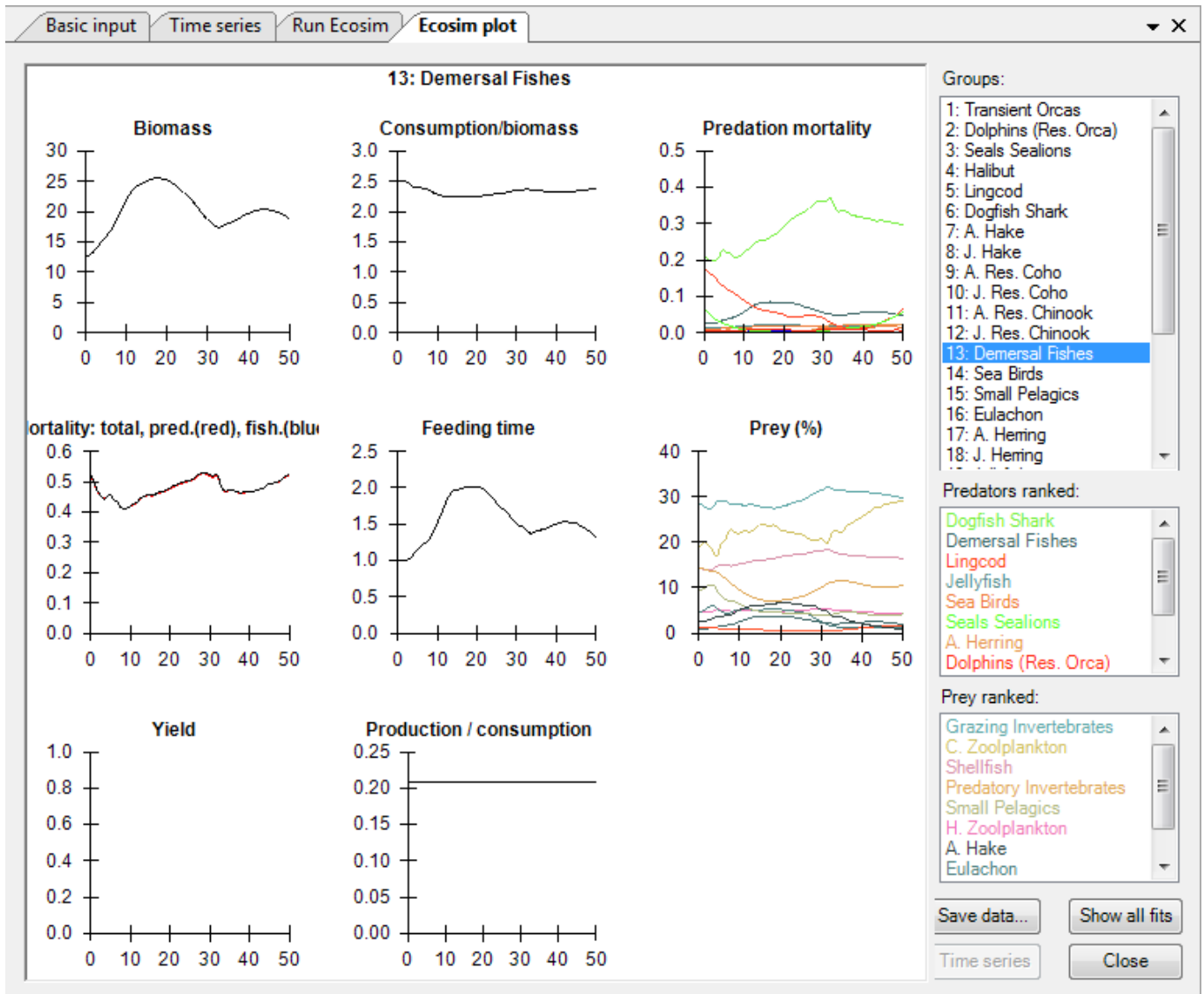


Figure 9.3 The Ecosim plot form showing predictions for the Demersal fishes group. Predators and prey are ranked by average consumption in descending order.

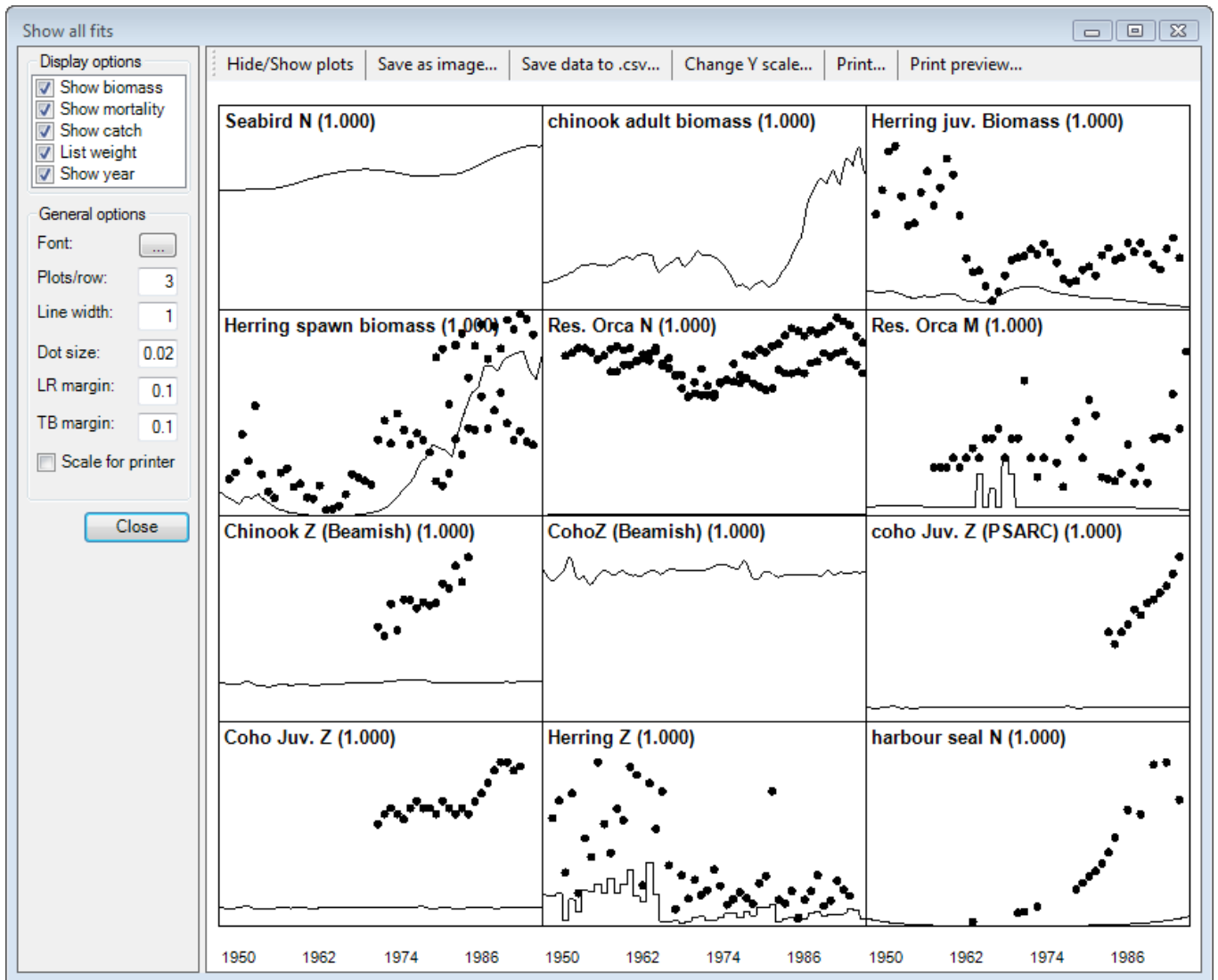


Figure 9.4 The *Show all fits* form showing initial fits for select groups (prior to any fitting). See [Time series fitting](#) and [Hints for fitting models to time series reference data](#) for more on fitting models to data.